



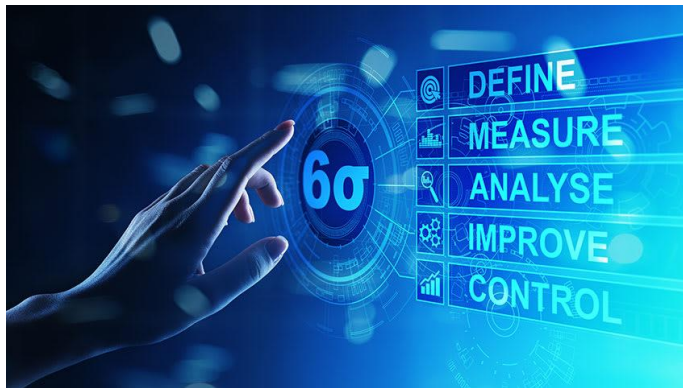
Master of Science
in
Applied Manufacturing Engineering
Online

Sayeed Shohag, Ph.D.
Assistant Professor
Department of Engineering and Technology
University of North Alabama

Disclaimer: the content of this document is subject to change

Why UNA's MS in Applied Manufacturing Engineering?

- **Flexible** program
- Meet the **demands of working professionals**
- Students can strengthen their **knowledge of applied engineering and technology** all while maintaining prior outside commitments
- Offers the **skills and training** in high demand by manufacturing employers



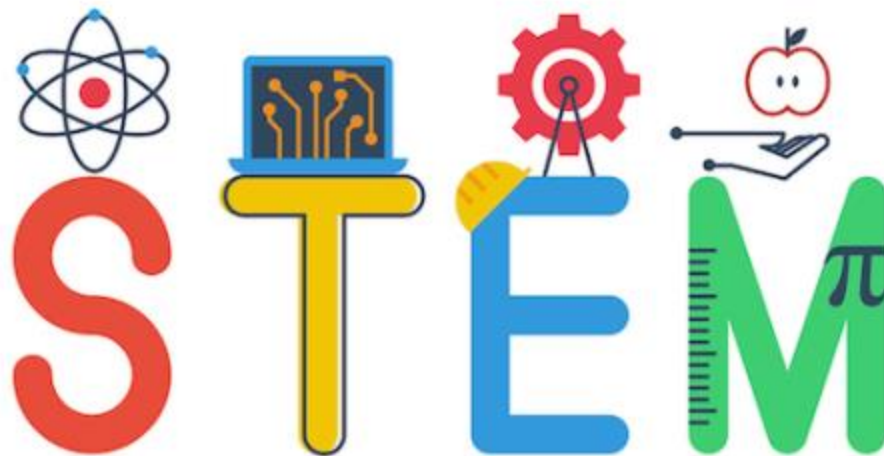
<https://www.simplilearn.com/what-is-six-sigma-a-complete-overview-article>



<https://in.pinterest.com/pin/581879214333950338/>

Who is Eligible?

- A four-year engineering degree from an ABET-accredited school
- A four-year engineering technology degree from an ABET-accredited school
- Other four-year STEM degree holders may also be eligible; contact us at mshohag@una.edu for a consultation.



<https://stfrancisacademybh.org/stem/stem-icon/>

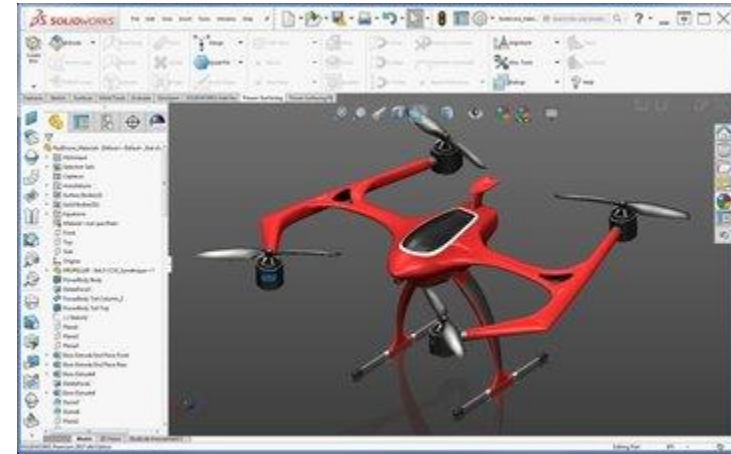
Dual Enrollment for UNA Undergraduates

- Offers qualified UNA undergraduate students the opportunity to enroll in graduate coursework
- UNA undergraduates can apply **concurrently** to an undergraduate and graduate degree.
- No time conflict with your undergraduate courses
- Tuition rate is the same as the undergraduate tuition rate* – save your time and money

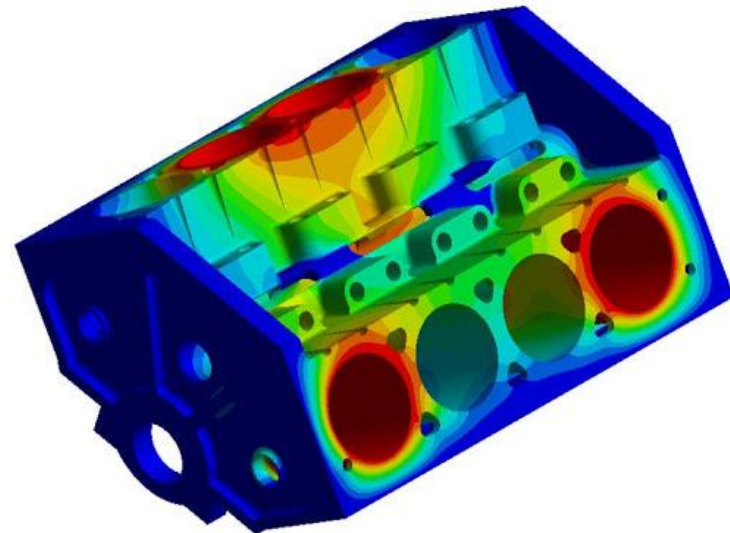
*Subject to change

Courses

- Platform classes in Applied Math and Programming build upon prior education.
- Manufacturing classes include:
 - Manufacturing Systems Design
 - Reliability Engineering
 - Quality Control and Six Sigma
 - Engineering Analysis and Simulation
- Choose from discipline-specific classes in:
 - 3D Modeling
 - Chemical Processes
 - Automated Manufacturing
 - Bio-Engineering
- Choose from MBA classes in:
 - Project Management
 - Team Building
 - ERP Systems



<https://all3dp.com/2/best-solidworks-alternatives/>

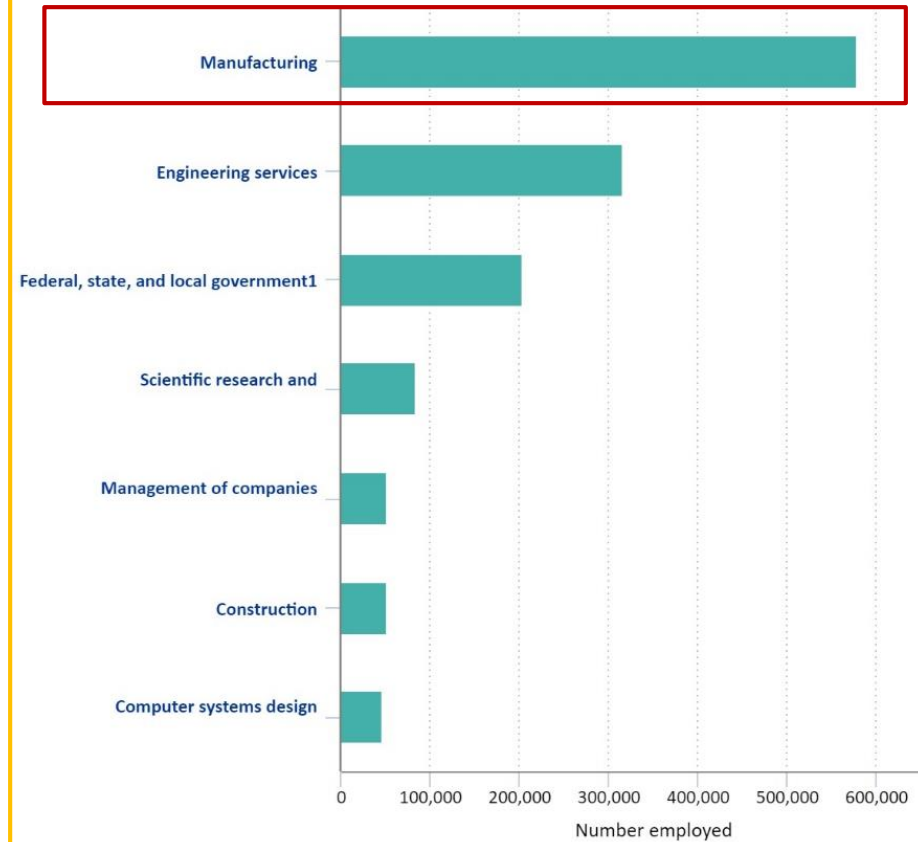


<http://autarkyengineering.com/finite-element-analysis-fea-2/>

Potential Jobs

- Manufacturing Manager
- Project Manager
- ERP Manager
- Manufacturing Director
- Facilities Manager
- Maintenance Manager
- General Manager
- Safety Manager
- Process Engineer

Top industries of employment for engineers, 2016



Source: U.S. Bureau of Labor Statistics

Advising and Mentoring Support

Students get advising and mentoring support from the university's outstanding professors

Dr. Peter Rim
Chair
Dept. of Engineering
and Technology



Dr. Jonathan Sullivan
Chemical Engineering
Course: Advanced
Applied Chemical Process
Engineering



Dr. Sayeed Shohag
MS Program
Courses: Quality
Control & 6-Sigma
Manufacturing Systems
Design



Dr. Ravi P. Gollapalli
Electrical Engineering
Course: Precision
Control and
Automated
Manufacturing



Dr. Dony Pan
Mechanical
Engineering



Course: 3D Modeling
for Manufacturing
Industries

Dr. Heejoon Park
Bio-Engineering

Course:
Bio-Engineered Products



Tuition and Aid

- \$350 per credit hour and a \$50 per-credit-hour Distance Learning fee*
- Less than \$13,000*
- You may take advantage of tuition reimbursement from your employer

*Subject to change



https://www.clipartkey.com/view/iihTJho_college-financial-aid-icon/

Contact

Department of Engineering and Technology

General Inquiries

Email: engineering@una.edu

<https://www.una.edu/engineeringtechnology/graduate/index.html>

Any specific question regarding our MS program

Sayed Shohag, Ph.D.

Email: mshohag@una.edu

Phone: (256)765-5030

