



University of  
**NORTH ALABAMA**

**SPRING 2024  
NEWSLETTER**

# Center for **WOMEN'S STUDIES**



## **Location**

The Center for Women's Studies is located in Rice Hall, 1st Floor.

## **Hours**

Monday - Friday: 8 AM - 4:30 PM.

## **Mission**

We aim to educate, support, and reach out to women on our campus in the context of a global community!

## **Contact**

Dr. Andrea Hunt  
**Executive Director**  
ahunt3@una.edu

Alyson Bergner  
**Associate Director**  
abergner@una.edu

256.765.5158



## **SEMESTER IN REVIEW**

**Hello friends and colleagues,**

**We are so thankful for the time you've spent with us this Spring. Your love and caring have helped transform our campus into a community.**

**Seeing your smiling faces at our events truly makes our work so rewarding. From our celebration of Black History Month, to honoring our loved ones fighting cancer, your support is greatly appreciated.**

**The Center for Women's Studies will be open throughout the Summer, except for closure on Fridays at 11:30am. Please feel welcome to stop by and say hello, relax in our hangout space, grab a snack and a beverage, and...bring a friend!**

**Enjoy your Summer!**

**Center for Women's Studies**





# Center for WOMEN'S STUDIES

University of NORTH ALABAMA

## CONGRATULATIONS!!!

The Center for Women's Studies, along with the Mitchell-West Center for Social Inclusion extend deep gratitude to our graduating student worker, **Disksha Chottani.**



## SERVICES PROVIDED

- Lactation Room
- AAUW Start Smart salary negotiation workshop
- Feminist Affinity Group
- Title IX Confidential Reporting Resources
- Period Project
- Mentorship

For more information about these and other services, please visit the Women's Center in Rice Hall, 1st Floor or contact us via email, phone, or social media

SPRING 2024  
NEWSLETTER



@WomensCenterUNA





# Mitchell-West Center for SOCIAL INCLUSION



## Location

The Mitchell-West Center for Social Inclusion is located in Rice Hall, 1st Floor.

## Hours

Monday - Friday: 8 AM - 4:30 PM.

## Mission

The Mitchell-West Center supports education, research, community, and advocacy by working with diverse groups on campus, in the Shoals, and across the state and region.

## Contact

Dr. Andrea Hunt  
**Executive Director**  
ahunt3@una.edu

Alyson Bergner  
**Associate Director**  
abergner@una.edu

256.765.5158

## SEMESTER IN REVIEW



North Alabama friends and family,

The Mitchell-West Center for Social Inclusion is grateful to have spent these past few months with you, creating community and belonging throughout our shared campus home.

Along with our campus and community partners, the Center hosted dozens of events, including music, poetry, painting, kayaking, campfires, and so much more.

The Center will be open throughout the Summer, although we will close at 11:30 on Fridays along with other campus offices.

To those who are graduating, we wish you so much love, joy, and success in the next steps of your journey. We'll be rooting for you!

Returning students, we'll see you in the Fall! Enjoy your summer, wear sunscreen, drink water, and send pics!

With love,  
Mitchell-West Center for Social Inclusion



SPRING 2024  
NEWSLETTER

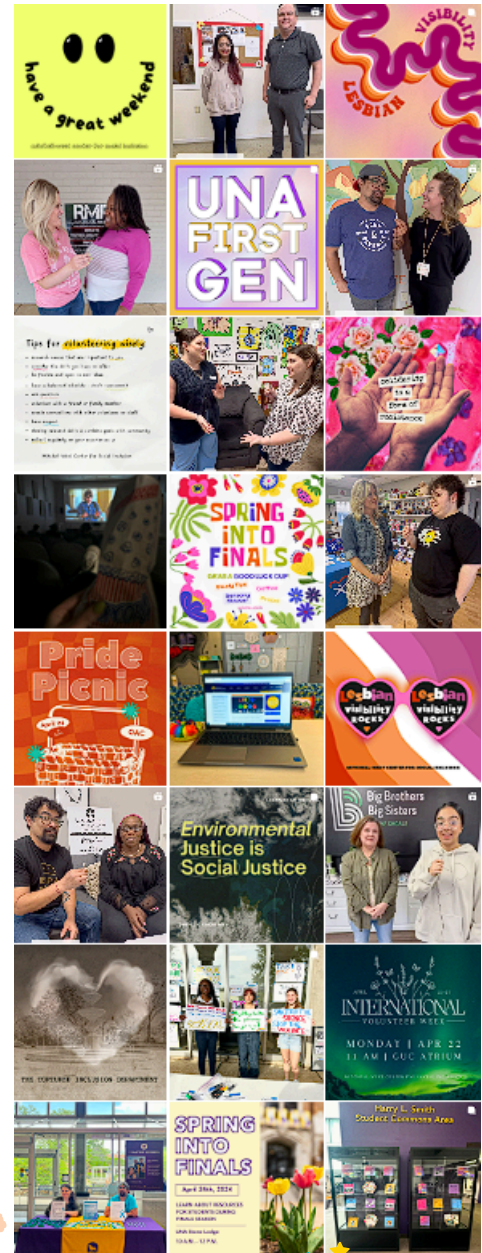


@UNAinclusion

# Mitchell-West Center for SOCIAL INCLUSION

University of NORTH ALABAMA

## SPRING BLOG RECAP



### CELEBRATING BLACK HISTORY MONTH

AFRICAN AMERICANS IN THE ARTS

MITCHELL-WEST CENTER FOR SOCIAL INCLUSION

Our February blog honored the creativity and ingenuity of African American artists.

In March, we recognized women that advocate for belonging and community.

### Celebrating Women's History Month:

Women who advocate for  
Equity, Diversity, and Inclusion



LGBTQ+

in

STEM

During April's Diversity Education Week we revisited the history of diversity in education.

