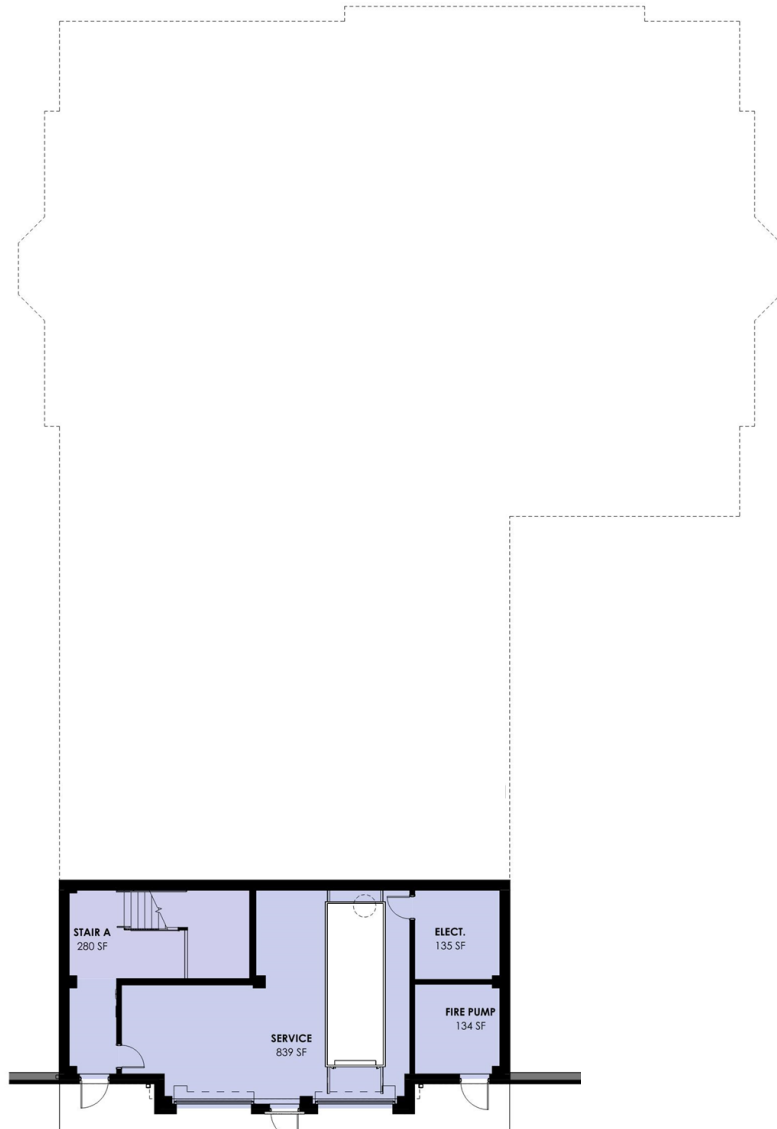




UNIVERSITY OF NORTH ALABAMA
SOUTHEAST RENDERING



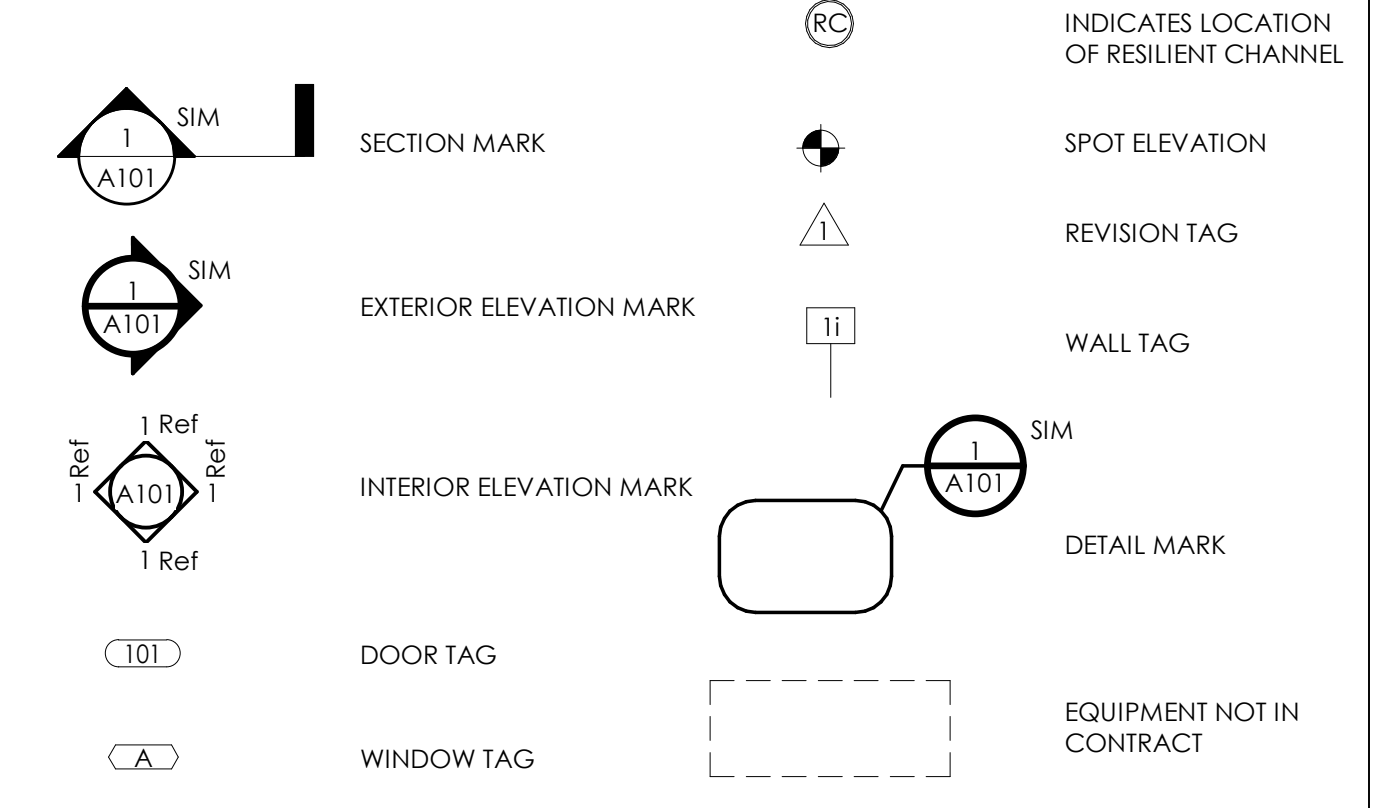
BASEMENT FLOOR PLAN



FIRST FLOOR PLAN



GRAPHIC SYMBOLS



GENERAL NOTES

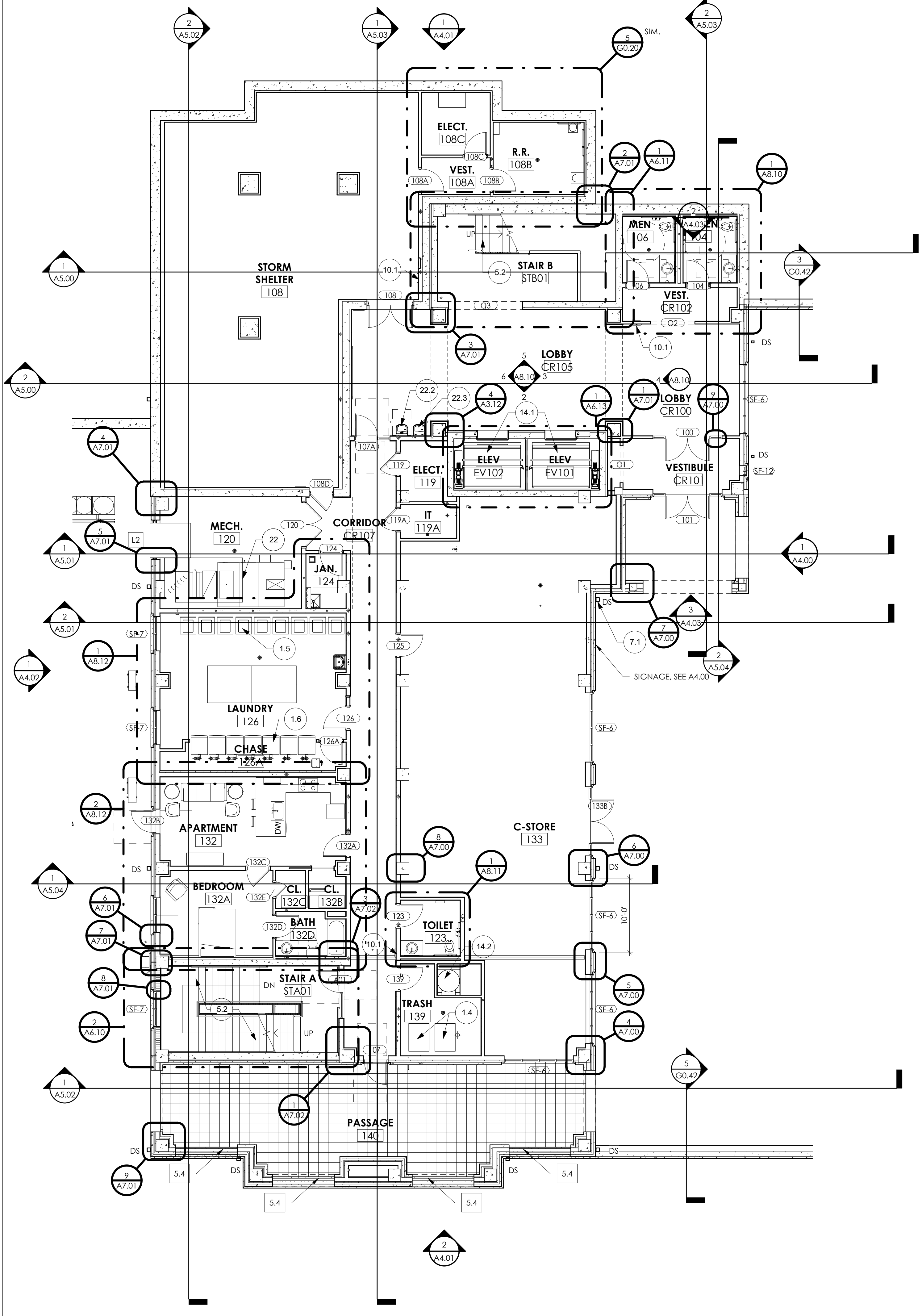
- ALL DIMENSIONS ARE TO CENTERLINE OF STUD OR CMU UNLESS NOTED OTHERWISE.
- "CLEAR" DIMENSIONS ARE FROM FINISH FACE TO FINISH FACE OF PARTITION.
- REFER TO A8.00 SERIES FOR ENLARGED UNIT PLANS AND PARTITIONS IN THOSE AREAS.
- REFER TO A8.00 SERIES FOR ENLARGED PLANS AND PARTITIONS IN THOSE AREAS.
- REFER TO A3.10 & A3.11 FOR PARTITION TYPES.
- LOCATE DOOR JAMBS 4" FROM FACE OF ADJACENT WALL, U.N.O.
- REFER TO SHEET A8.30 FOR ROOM FINISH LEGEND AND NOTES.
- ALL VERTICAL AND HORIZONTAL DUCTS, PIPES, CONDUITS, ETC. (WHETHER SHOWN OR NOT) IN FINISHED ROOMS NOT ENCASED IN FINISHED WALLS OF CEILING SHALL BE FURRED IN AND FINISHED TO MATCH ADJACENT FINISH SURFACES.
- FURNISH ACCESS PANELS IN WALLS AND NON ACCESSIBLE TYPE CEILING WHERE SERVICE OR ADJUSTMENT TO MECH., PLUMB., OR ELECT. EQUIPMENT IS REQUIRED.
- PROVIDE CONTOUR JOINTS IN GYPSUM WALLBOARD AT 30 FEET O.C. MAX. WHERE POSSIBLE LOCATE JOINTS ABOVE DOOR FRAME.
- GYPSUM WALLBOARD IN TOILETS AND OTHER AREAS SUBJECT TO WETTING SHALL BE MOISTURE RESISTANT, CEMENTITIOUS WALLBOARD IS TO BE INSTALLED AT WALLS TO RECEIVE CERAMIC TILE.
- ALL FIRE-RATED WALLS SHALL BE CONSTRUCTED OF FIRE-RESISTIVE UL CLASSIFIED MATERIALS APPLIED IN STRICT CONFORMANCE TO THE APPLICABLE FIRE TEST DESIGNATION.
- SEE STC WALL TREATMENT NOTE ON A3.10
- "RC" DENOTES THE SIDE OF THE PARTITION THE RESILIENT CHANNEL IS TO BE PLACED

LAYOUT NOTES

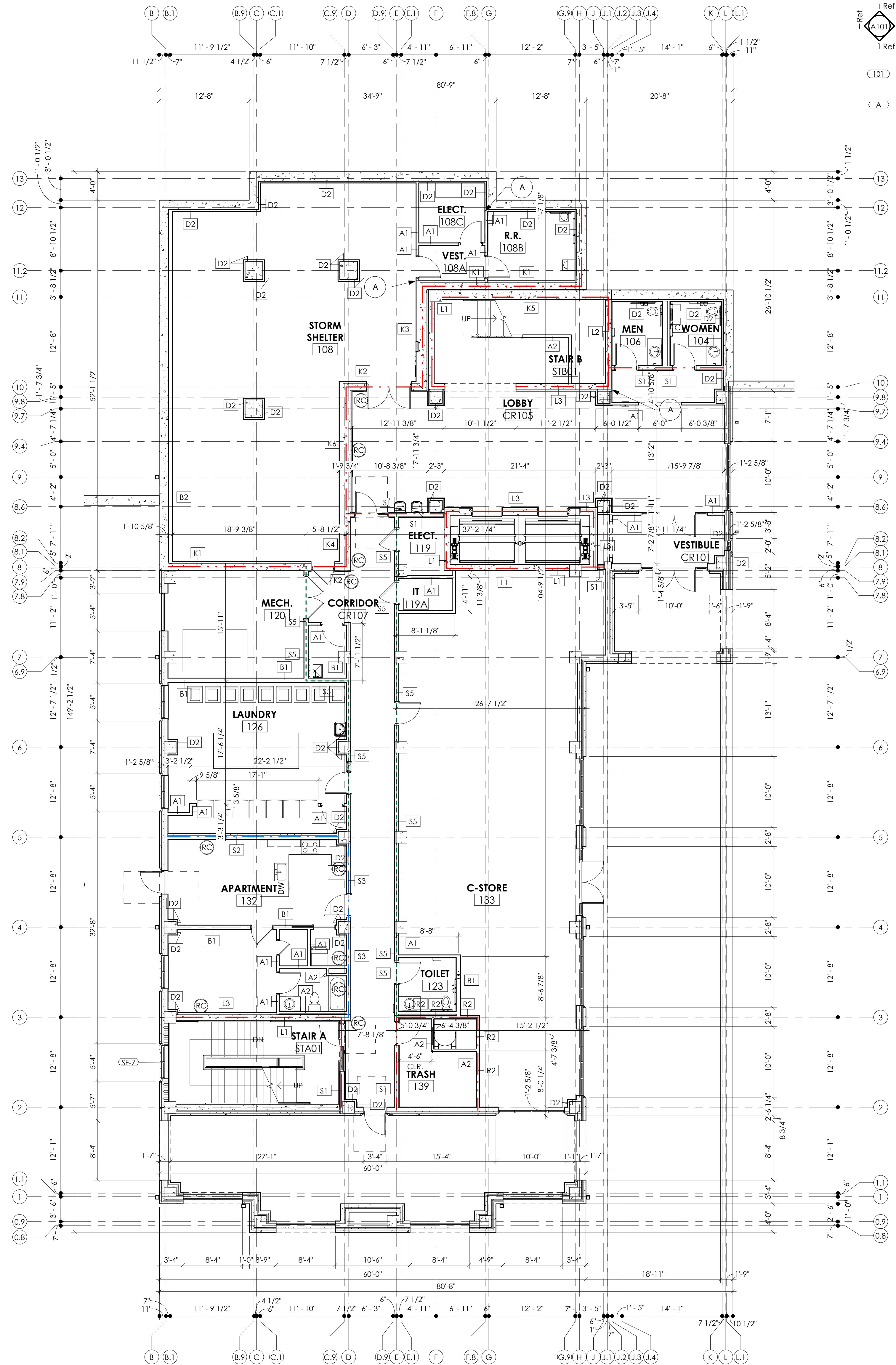
- ALIGN
- ALIGN METAL STUDS, CONTINUE 1/2" RESILIENT CHANNEL AND 5/8" GYPSUM BOARD AS REQUIRED TO MAKE SURFACES FLUSH.
- ALIGN FACE OF GYPSUM BOARD.
- MAINTAIN 1" MINIMUM FROM FACE ELEVATOR SHAFT. DO NOT ATTACH OR BRACE METAL STUDS TO ELEVATOR SHAFT.

PLAN NOTES

- DUMPSTER (N.I.C.)
- DISPLAY EQUIPMENT (N.I.C.)
- REFRIGERATED DISPLAY (N.I.C.)
- TRASH CARTS (N.I.C.)
- LAUNDRY - WASHER
- LAUNDRY - DRYER
- STEEL ANCHORS EMBEDDED IN FLOOR SLAB (RE: 3/A2.00)
- CONCRETE-FILLED METAL PAN STAIRS
- 42" HIGH STEEL PIPE GUARDRAIL
- 42" HIGH STEEL ORNAMENTAL GUARDRAIL
- STEEL PIPE RAIL GATE
- 1" STEEL BAR GRATING
- 8" MTL STUDS @ 16" O.C.
- STEEL LADDER
- 6"x5" ALUM. DOWNSPOUT
- 4"x3" ALUM. DOWNSPOUT
- DOWNSPOUT BOOT - CONNECT TO STORM DRAIN
- FIRE EXTINGUISHER & CABINET
- AED (BRACKET MOUNTED)
- FIRE EXTINGUISHER ON BRACKET
- ELEVATOR
- TRASH CHUTE W/ ACCESS DOOR
- TRASH CHUTE ABOVE
- FIRE PROTECTION EQUIPMENT - SEE FIRE PROTECTION PLANS
- MEP EQUIPMENT - SEE ENGINEERING DRAWINGS
- DOWNSPOUT BOOT
- ELECTRIC WATER COOLER (ADA HEIGHT)
- ELECTRIC WATER COOLER W/ BOTTLE FILLER



2
A2.01
 1/8" = 1'-0"



1
A2.01
 1/8" = 1'-0"

IFC
 ISSUE FOR
 CONSTRUCTION

REVISIONS:

No	Date	Description

SHEET TITLE:
 FIRST FLOOR PLAN
 DCM NUMBER: 2023672
 PROJECT NUMBER: 2918
 CHECKED BY: EB, DR
 ISSUE DATE: 5/30/24
 DRAWN BY: HC, MR, HG