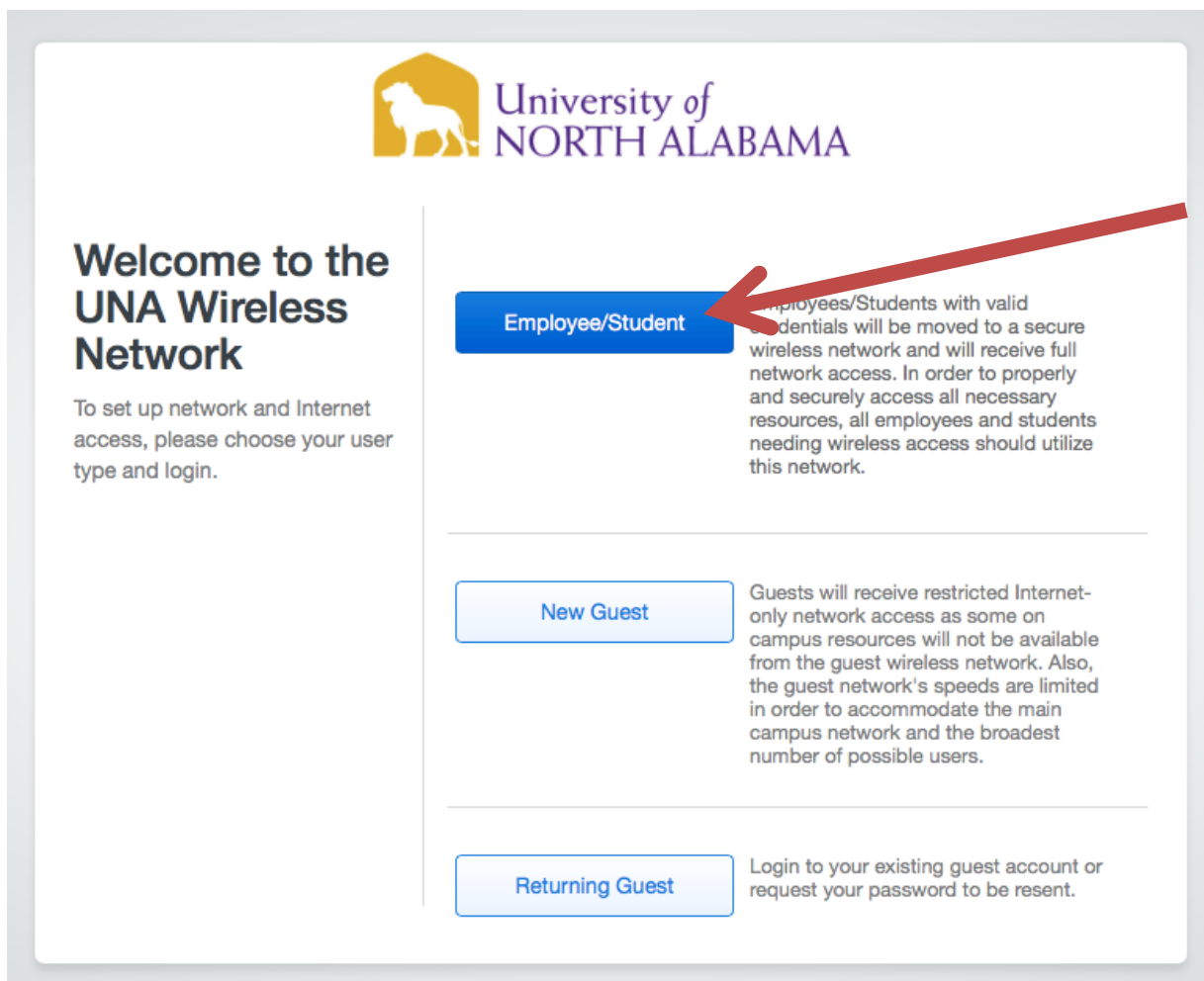



Faculty, Staff & Student Guide for Connecting Macs to Campus Wireless

1. Select **UNA Start Here** in your list of available wireless networks.
2. When your device shows connected to **UNA Start Here**, open a web browser and attempt to surf—you will be redirected to the site shown below.
3. Select **Employee/Student**.



 University of
NORTH ALABAMA

Welcome to the UNA Wireless Network

To set up network and Internet access, please choose your user type and login.

Employee/Student Employees/Students with valid credentials will be moved to a secure wireless network and will receive full network access. In order to properly and securely access all necessary resources, all employees and students needing wireless access should utilize this network.

New Guest Guests will receive restricted Internet-only network access as some on campus resources will not be available from the guest wireless network. Also, the guest network's speeds are limited in order to accommodate the main campus network and the broadest number of possible users.

Returning Guest Login to your existing guest account or request your password to be resent.

4. Select your **device/operating system** from the drop-down list if it isn't automatically detected.



University of
NORTH ALABAMA

Welcome to the configuration and connection technology for UNA WiFi. Click to get started.

The following system was detected:



Mac OS X El Capitan

JoinNow

By clicking the JoinNow button you accept the following [Acceptable Use Policy](#).

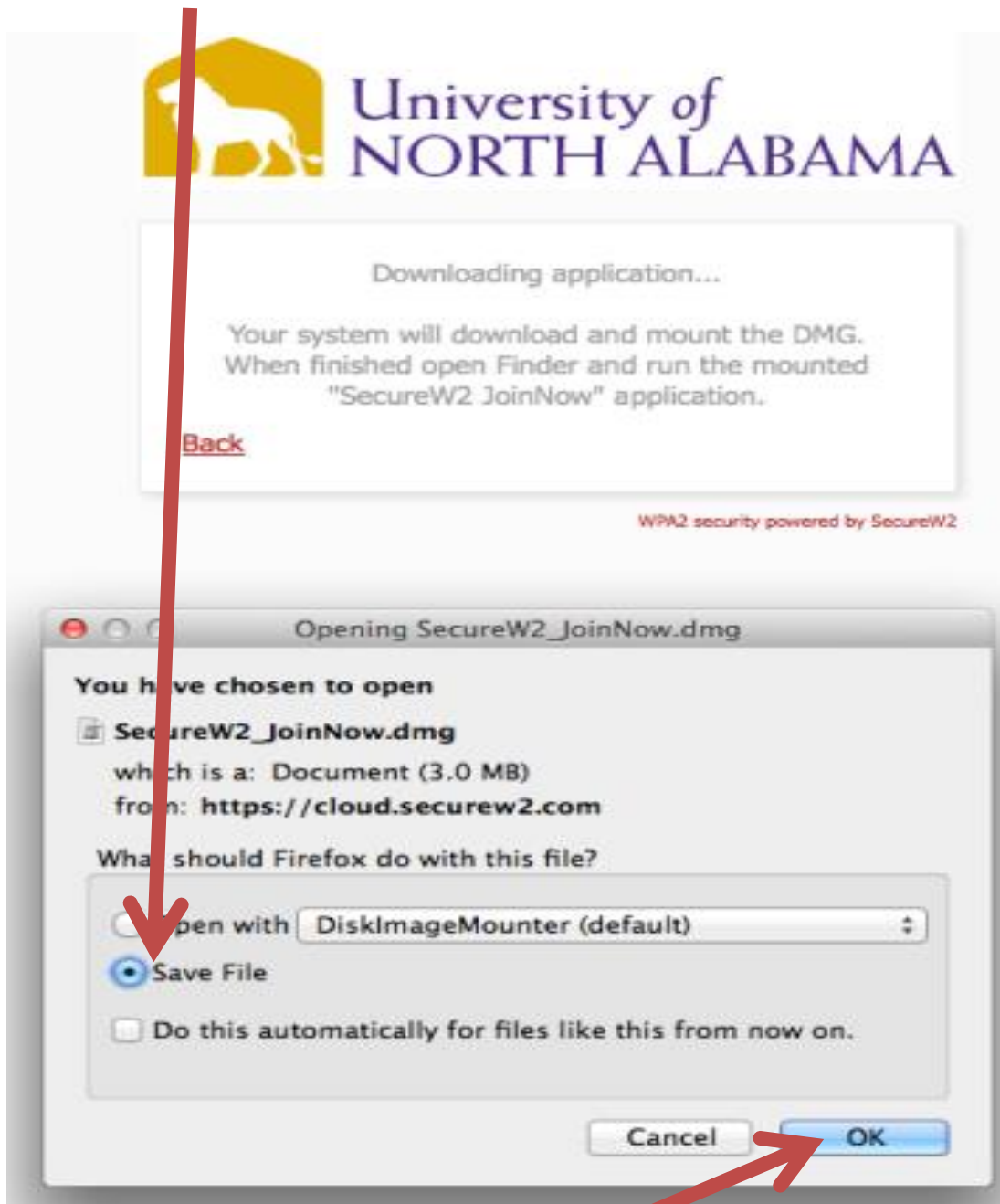
Was your device detected incorrectly?

Select your device:

Powered by SecureW2

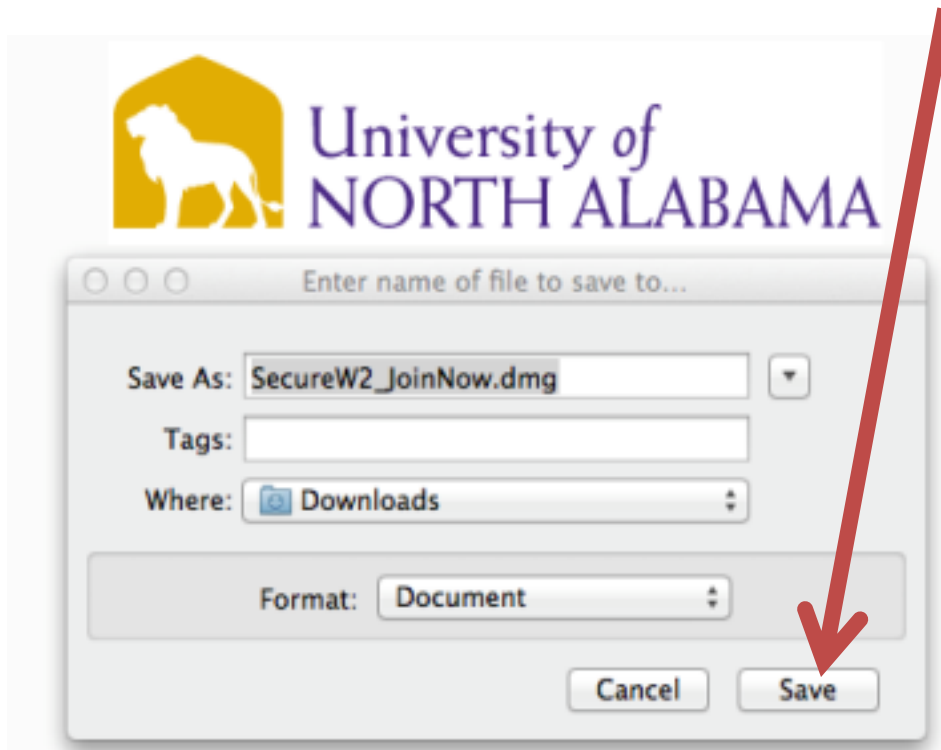
5. Select **Join Now**.

6. Select **Save File**.

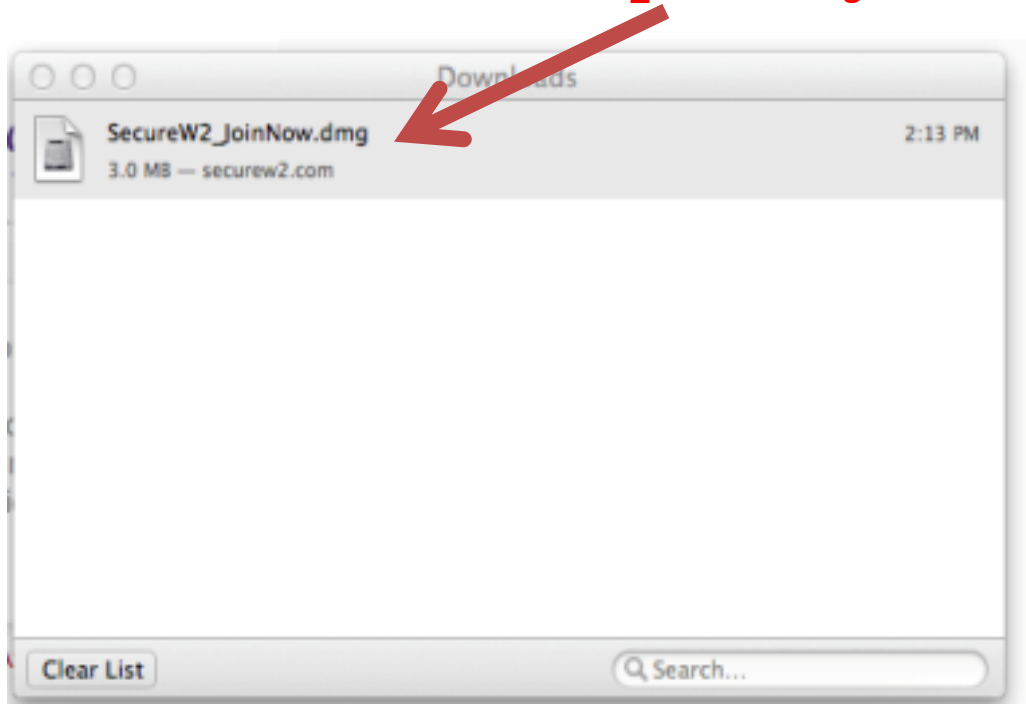


7. Select **OK**.

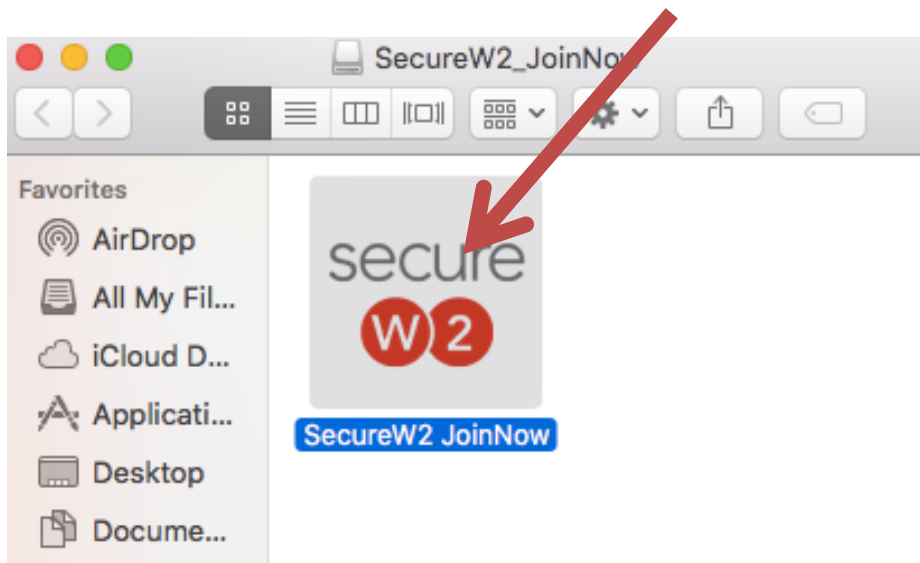
8. Choose where you want to download the file, and select **Save**.



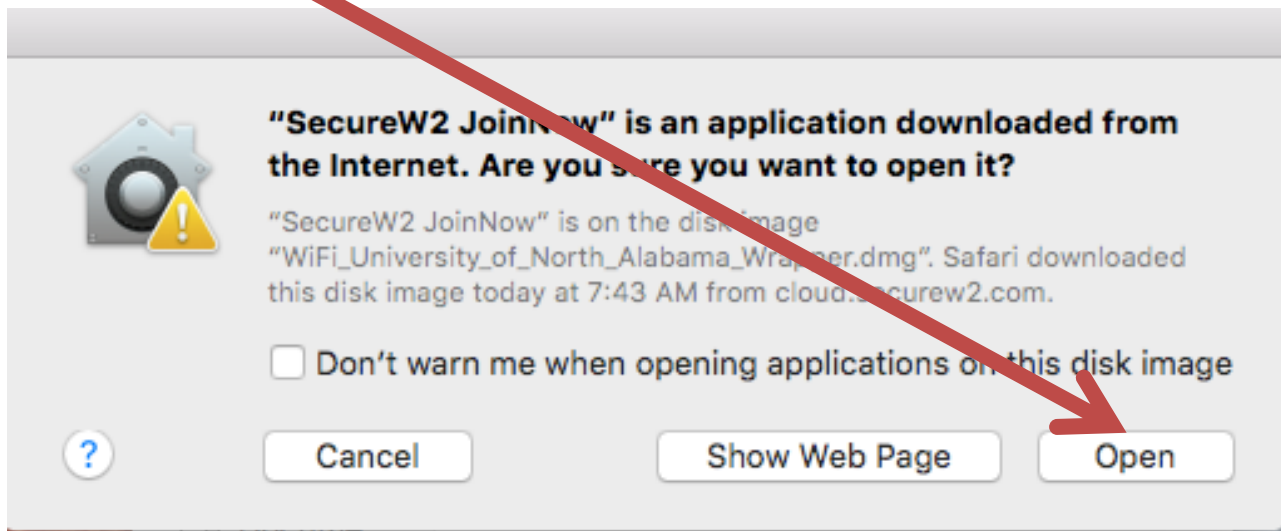
9. Locate the downloaded file **SecureW2_JoinNow.dmg** and double-click it.



10. Double-click the extracted file **SecureW2 JoinNow**.



11. Select **Open**.



12. Enter your **UNA Portal Username and Password.**

SecureW2 JoinNow

University of
NORTH ALABAMA

Please enter your UNA Portal Username and Password

UNA Portal User ID:

Enter your Password:

Show Password

CONFIGURE AUTHENTICATE JOINED

Next Cancel

13. Select **Next.**

14. If prompted by a security message, enter your OS X username/password and select **OK.**

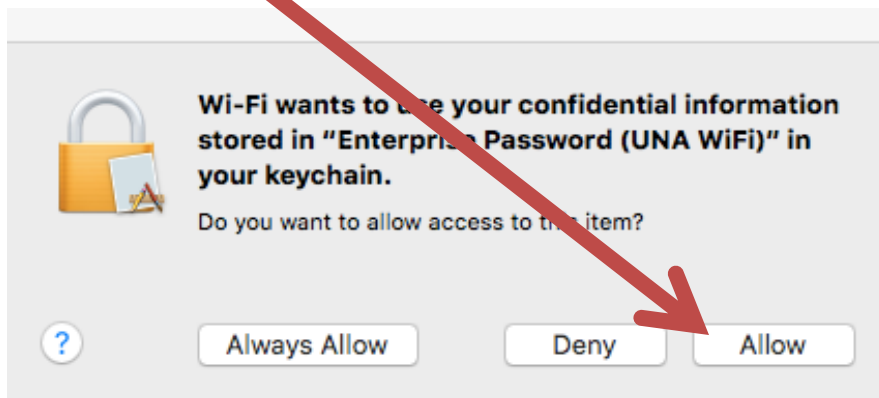
SecureW2 JoinNow wants to make changes. Type your password to allow this.

Username: mac user account

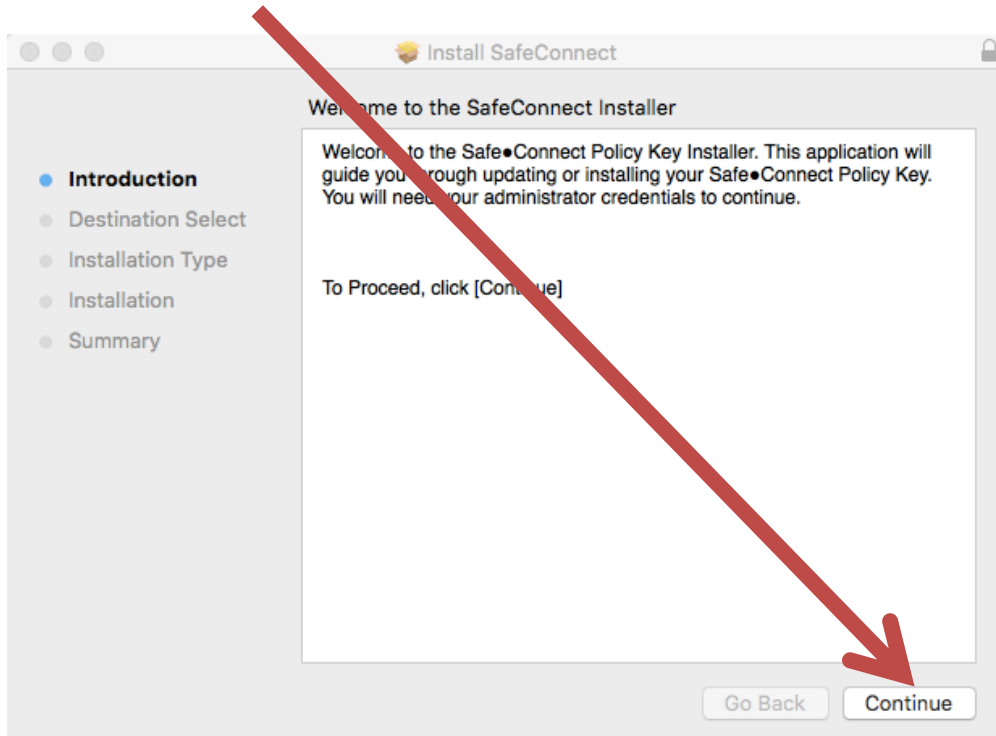
Password:

Cancel OK

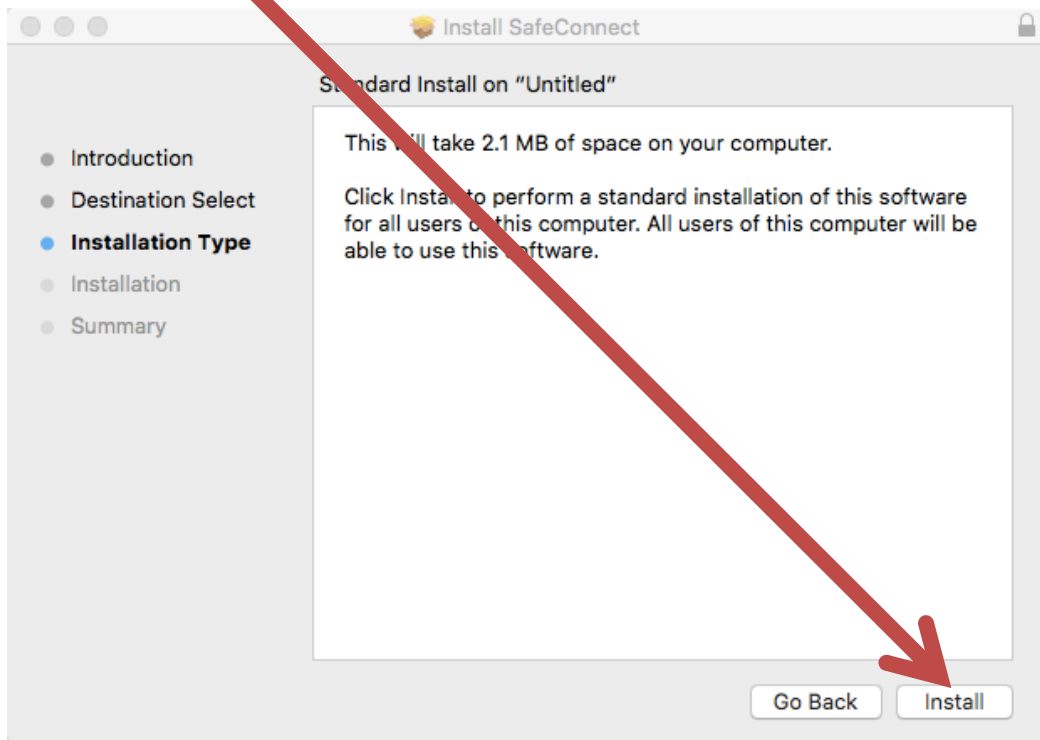
15. Select **Allow**.



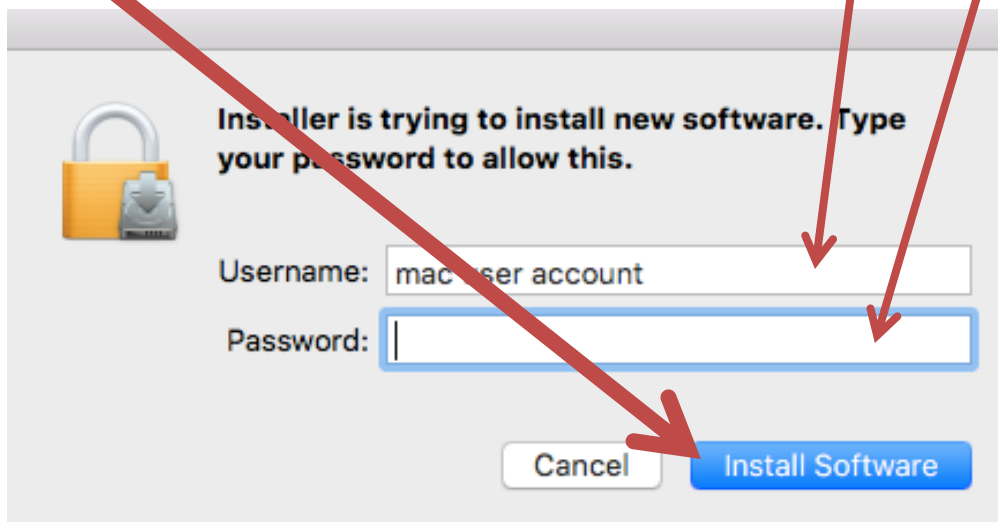
16. Select **Continue**.



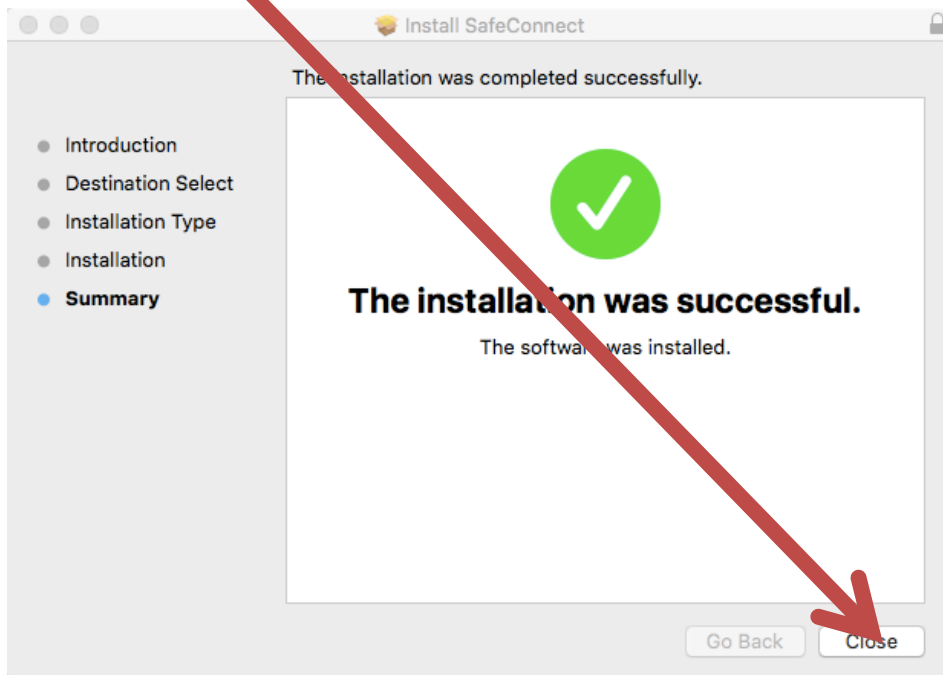
17. Select **Install**.



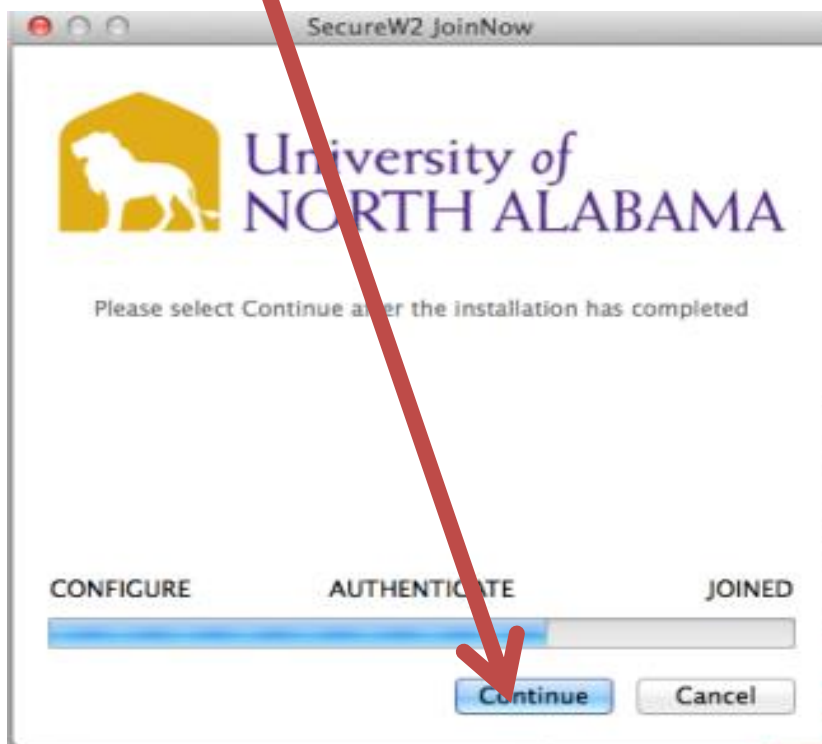
18. If prompted by a security message, enter your username/password and select **Install Software**.



19. Select **Close**.



20. Select **Continue**.



21. After you receive the “**Joined...**” message, Select **Done**.

