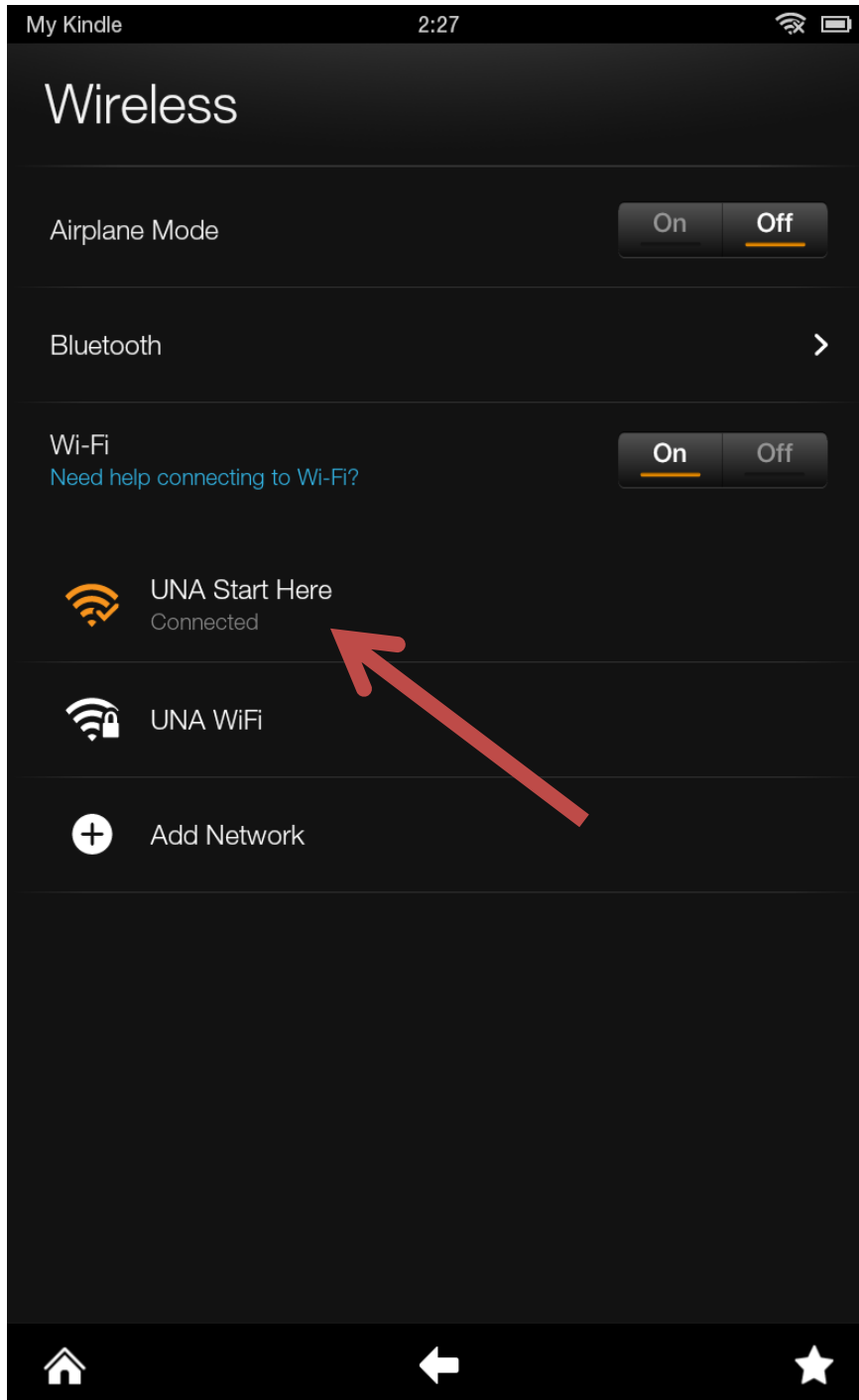
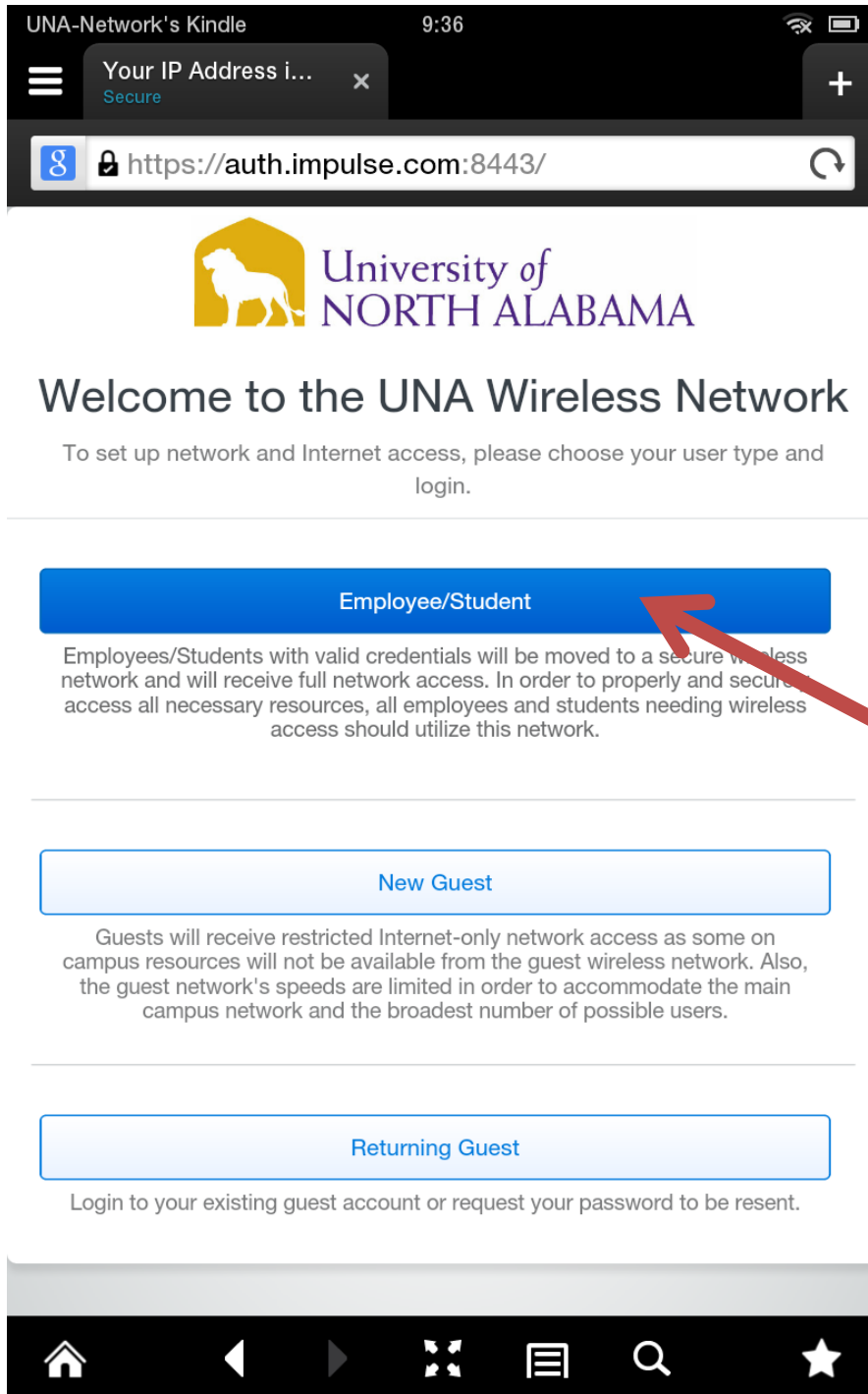


Faculty, Staff & Student Guide for Connecting a Kindle Fire to Campus Wireless

1. In your list of available wireless networks, select **UNA Start Here**.



2. When your device shows connected to UNA Start Here, Open a Web Browser.
3. On the Welcome screen, select **Employee/Student**.



4. In the "Step 1:" drop-down menu, select **Local Server**. In the "Step 2:" drop-down menu, make sure that **Kindle Fire** is selected as your device.



5. Select **Download**.

UNA-Network's Kindle 3:32

University of Nort... Secure

https://cloud.securew2.com/public/93847/UNA...

 University of
NORTH ALABAMA

Welcome to the configuration and connection technology for UNA WiFi. Click to get started.

The following system was detected:

kindle fire

Step 1: Please select a download source and install App.

Local Server

To allow "Local Server" App install the on your device, you may need to goto "Settings" and select either "Security" or "Applications". Turn on "Allow installation of non-market apps".

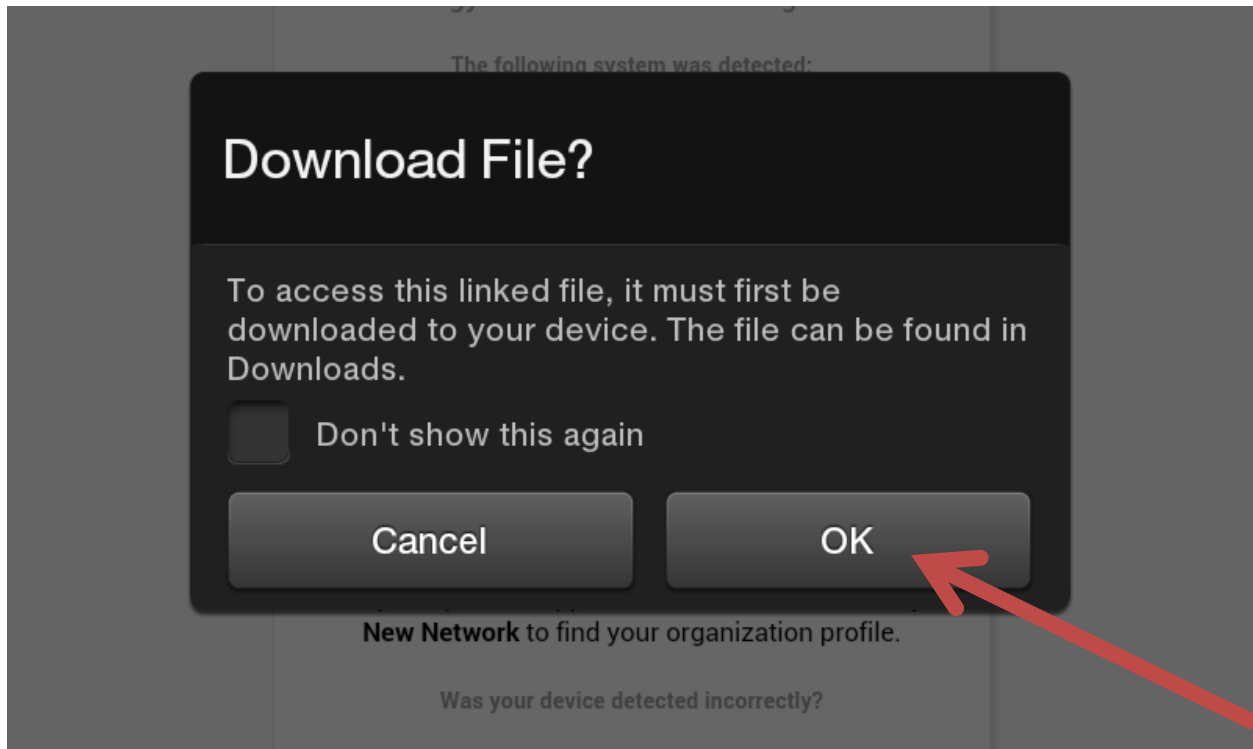
Step 2: Open the App and select **Search and Setup New Network** to find your organization profile.

Was your device detected incorrectly?

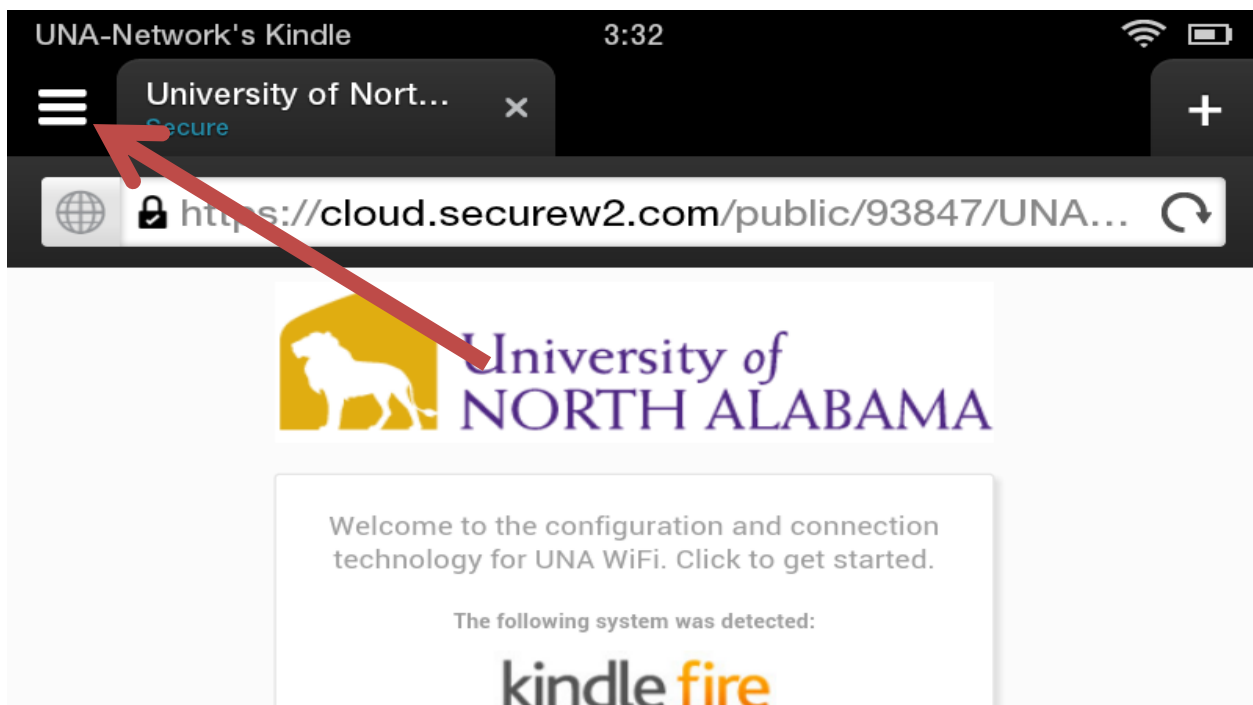
Select your device:

WPA2 security powered by SecureW2

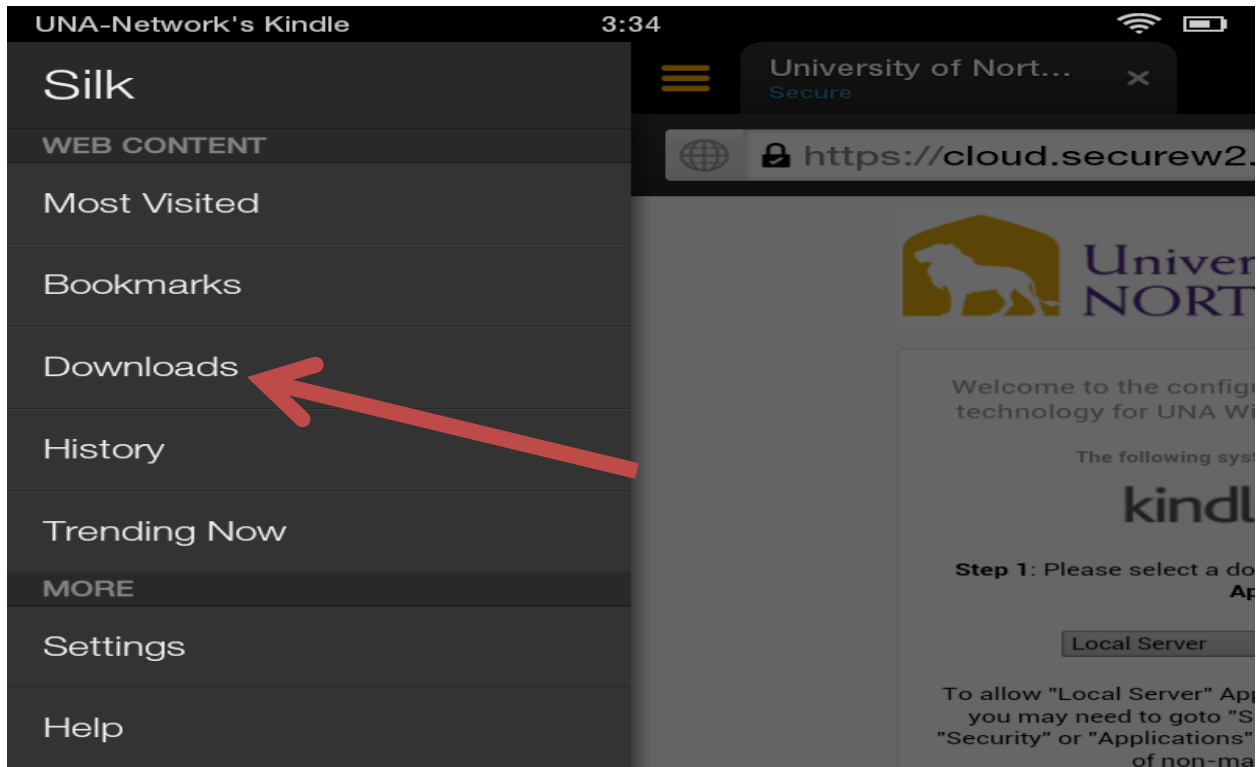
6. On the following screen, select **OK**.



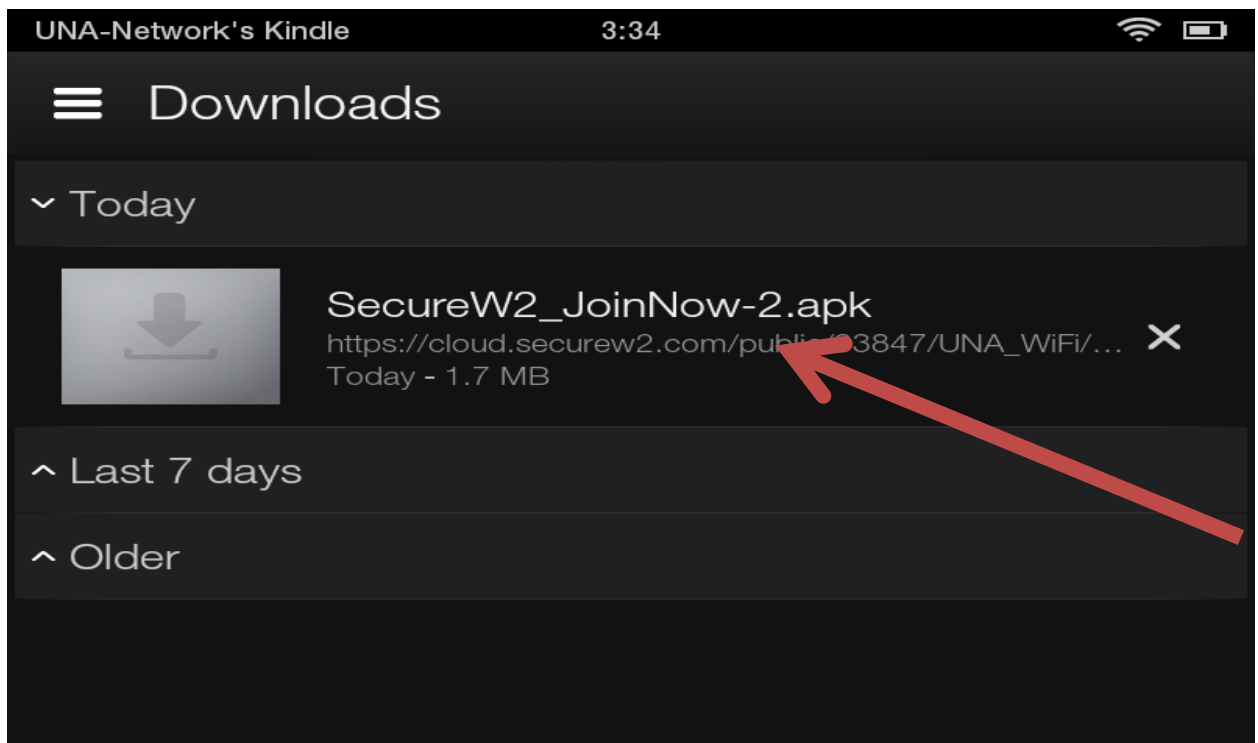
7. In the upper left of your screen, click on the 3 horizontal bars.



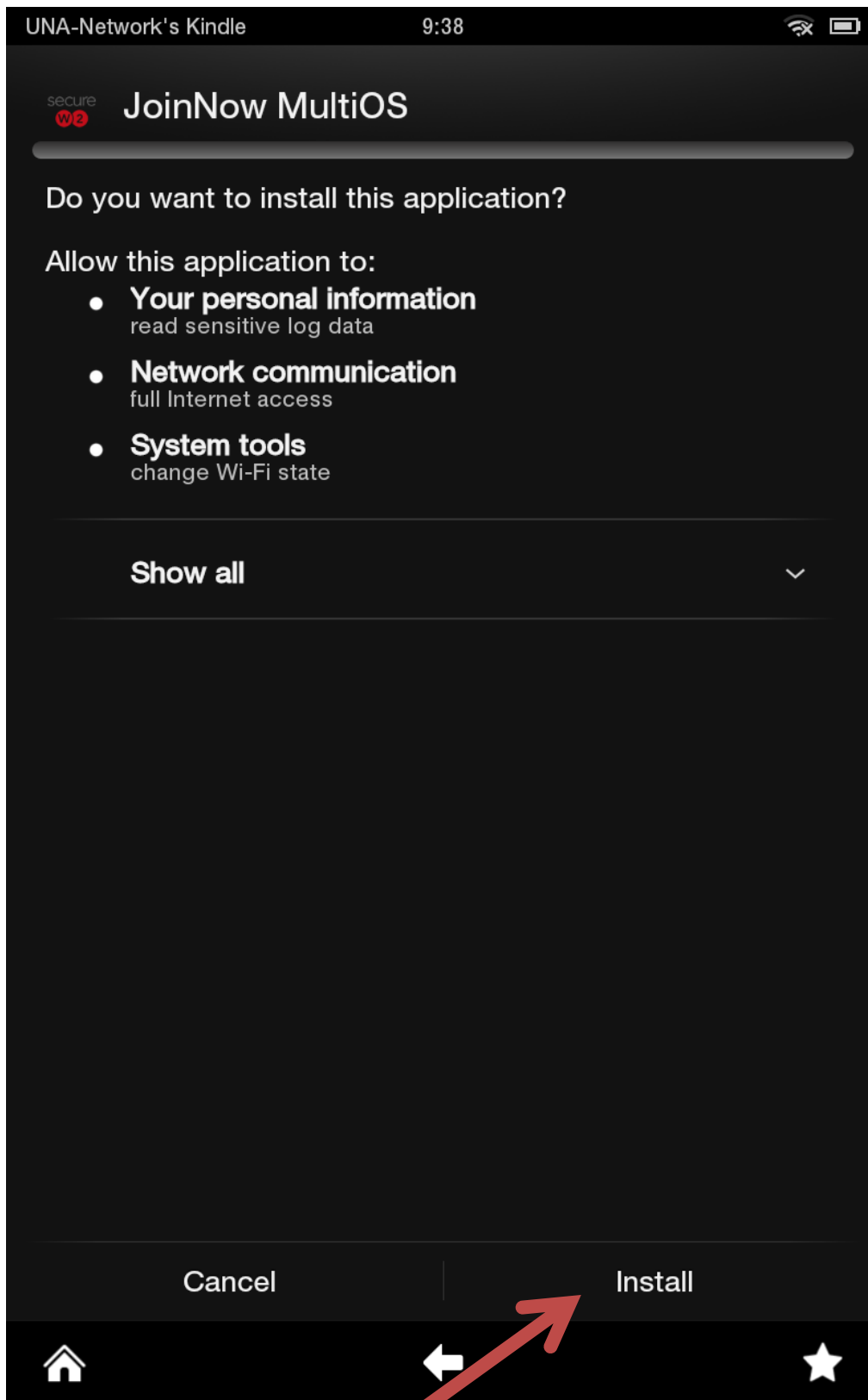
8. Select **Downloads**.



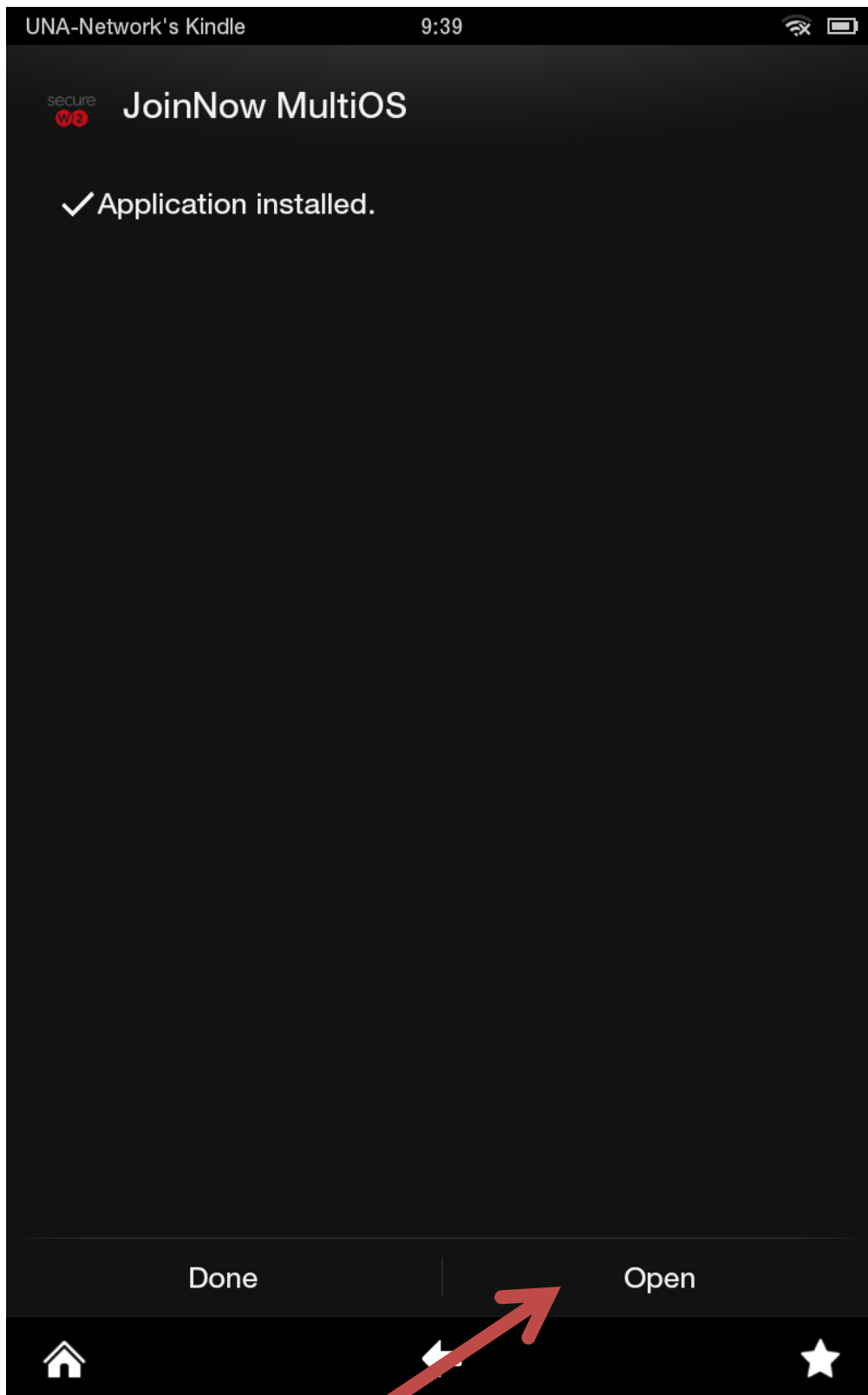
9. Select **SecureW2_JoinNow-2.apk** from the list available.



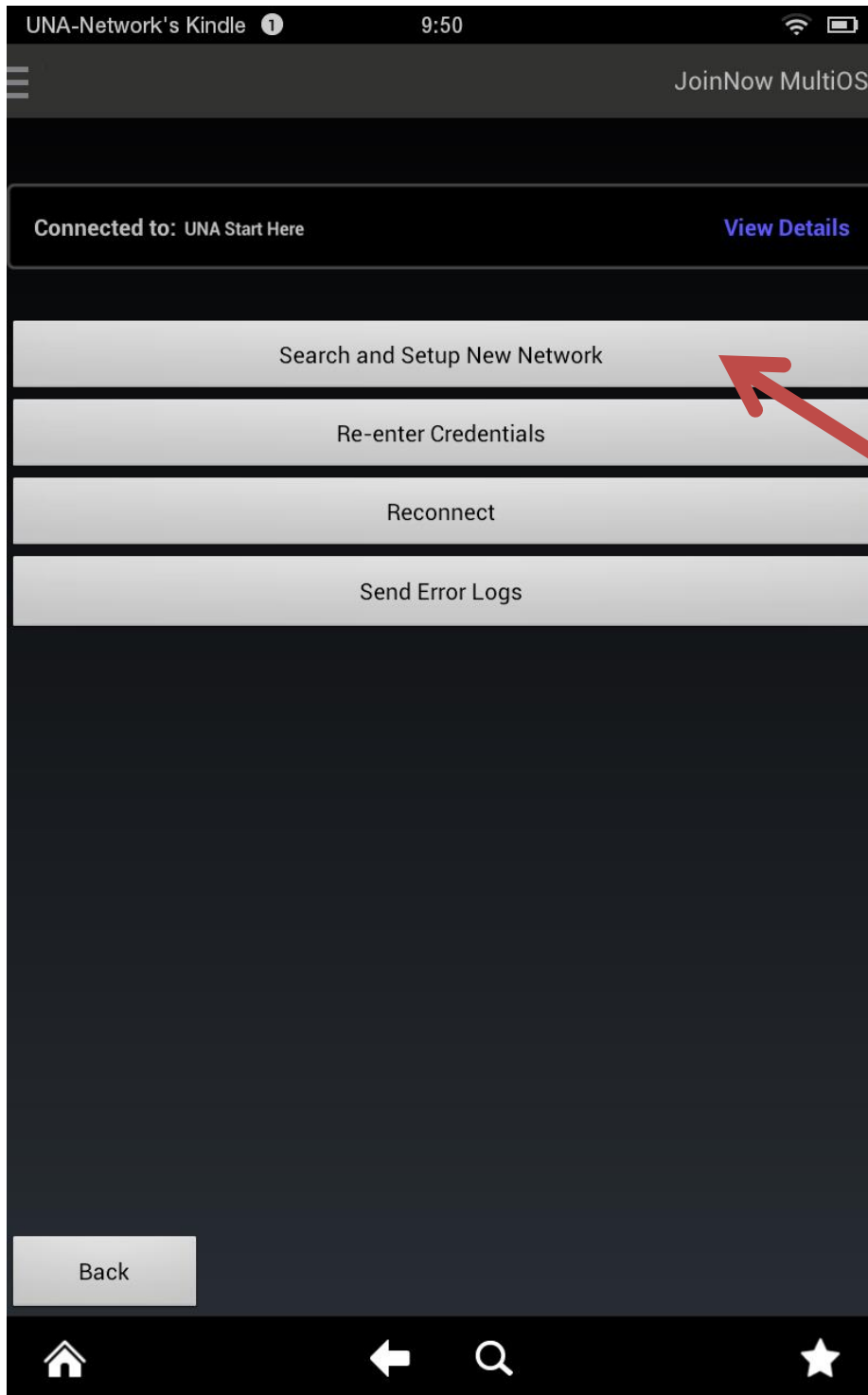
10. Select **Install**.



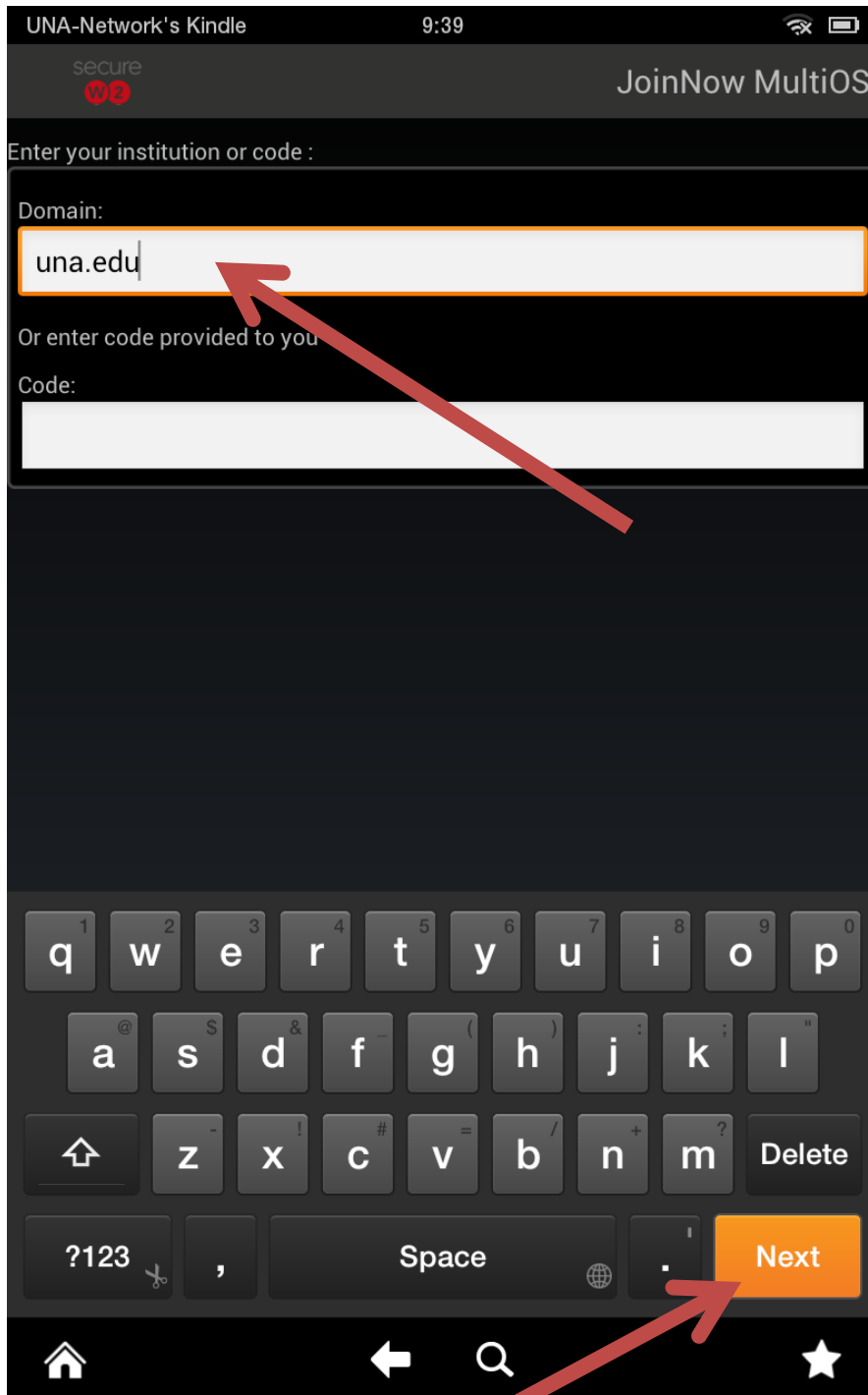
11. Select **Open**.



12. Select **Search and Setup New Network**.



13. Enter **una.edu** in the “Domain:” field on the following screen and select **Next**.



14. Leave the "Code:" field blank and select **Continue**.

UNA-Network's Kindle 3:37

secure W2 JoinNow MultiOS

Enter your institution or code :

Domain:
una.edu

Or enter code provided to you

Code:
|

Back Continue

15. Enter your **UNA Portal Username and Password** and select **Continue**.

The screenshot shows the 'JoinNow MultiOS' login interface on a Kindle device. The status bar at the top indicates 'UNA-Network's Kindle', the time '3:37', and connectivity icons. The app header includes a 'secure' logo and the title 'JoinNow MultiOS'. The main content area prompts the user to 'Please enter your credentials:' and provides two input fields: 'Enter your Username:' and 'Enter your Password:'. A 'Show Password' checkbox is located below the password field. At the bottom, there are 'Cancel' and 'Continue' buttons. Red arrows highlight the input fields and the 'Continue' button.

16. You should then receive the following screen and are connected to UNA's Wireless Network.

